
TURTLE LOGS

TO BASK OR NOT TO
BASK...THAT IS THE
OPTION.

Janee Kronk – Certified Natural Shoreline Professional

**Halcyon Earth & Sky, LLC – Sustainable Landscape
Design/Install**



LET'S START WITH THE FACTS...



- Our GREAT state of Michigan has 41.5% of its total area occupied by water.
 - About 11,000 inland lakes and ponds (that's a lot of shoreline!)
 - Roughly 242 streams (rivers and creeks) with a combined length of 36,350 miles = PLENTY of room for our turtle friends 😊
-

DID YOU KNOW...?

- Nine species of turtles are native to Michigan!
 - They are an important part of our state's ecosystems, acting as environmental indicators. Their presence and abundance, or their absence, can tell us about habitat quality.
 - An integral part of the food web, turtles play both roles of predator and prey.
 - Turtle populations face serious problems as a result of habitat loss due to development, collection, habitat fragmentation, road collisions, poor water quality, and increased predation by raccoons, opossums, and other urban animals.
-



MICHIGAN'S TREASURED TURTLES



← **Blanding's Turtle**
Emydoidea blandingii
[Species of ***SPECIAL CONCERN***]

Common Map Turtle →
Graptemys geographica



← **Common Musk Turtle**
Sternotherus odoratus



SPECIAL CONCERN = rare or uncertain;
not legally protected

MICHIGAN'S TREASURED TURTLES (CONTINUED)

Common Snapping Turtle →
Chelydra serpentina



← Eastern Box Turtle
Terrapene carolina ssp. carolina
[Species of *SPECIAL CONCERN*]

Painted Turtle →
Chrysemys picta



MICHIGAN'S TREASURED TURTLES (CONTINUED)



← Spiny Soft-Shell Turtle
Apalone spinifera

Spotted Turtle →
Clemmys guttata
[*THREATENED*]



THREATENED = legally protected



← Wood Turtle
Glyptemys insculpta
[Species of *SPECIAL CONCERN*]

LET'S KEEP ON WITH THE FACTS...



- Turtles belong to the reptile family along with snakes, lizards, crocodiles, and alligators.
 - Reptiles depend on the outside environment for body heat because they do not produce it internally.
 - For this reason, they are often seen basking in the sun during the spring and fall.
-

THE BENEFITS OF BASKING...

- Thermoregulation
 - Protects against parasites & leeches →
 - Absorption of ultraviolet radiation to help facilitate bone growth
-



Blanding's Turtle



TURTLES THRIVING...

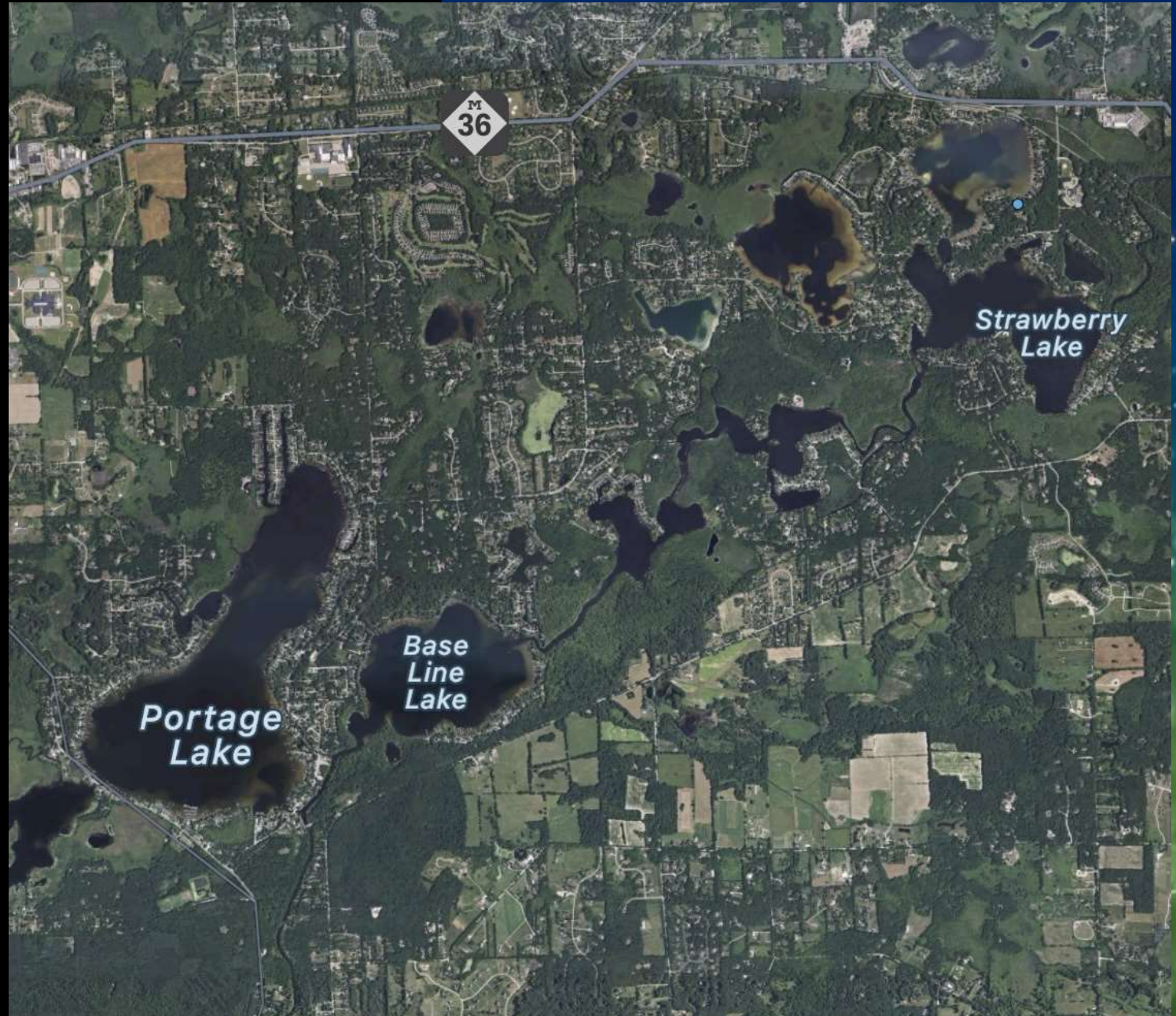
Have you ever had the
pleasure of boating
down a river in Michigan
and seen a turtle or ten
basking on a fallen log in
the sunshine?



HOW ARE THE TURTLES SURVIVING?



AND IT
GOT ME
THINKING...





Seawall

Seawall



Materials

- Cedar Logs
- Eye Screws
- Nylon Rope
- Cinder Blocks
- Knot Knowledge
- A healthy dose of CONFIDENT HOPE in the basking behaviors of turtles☺



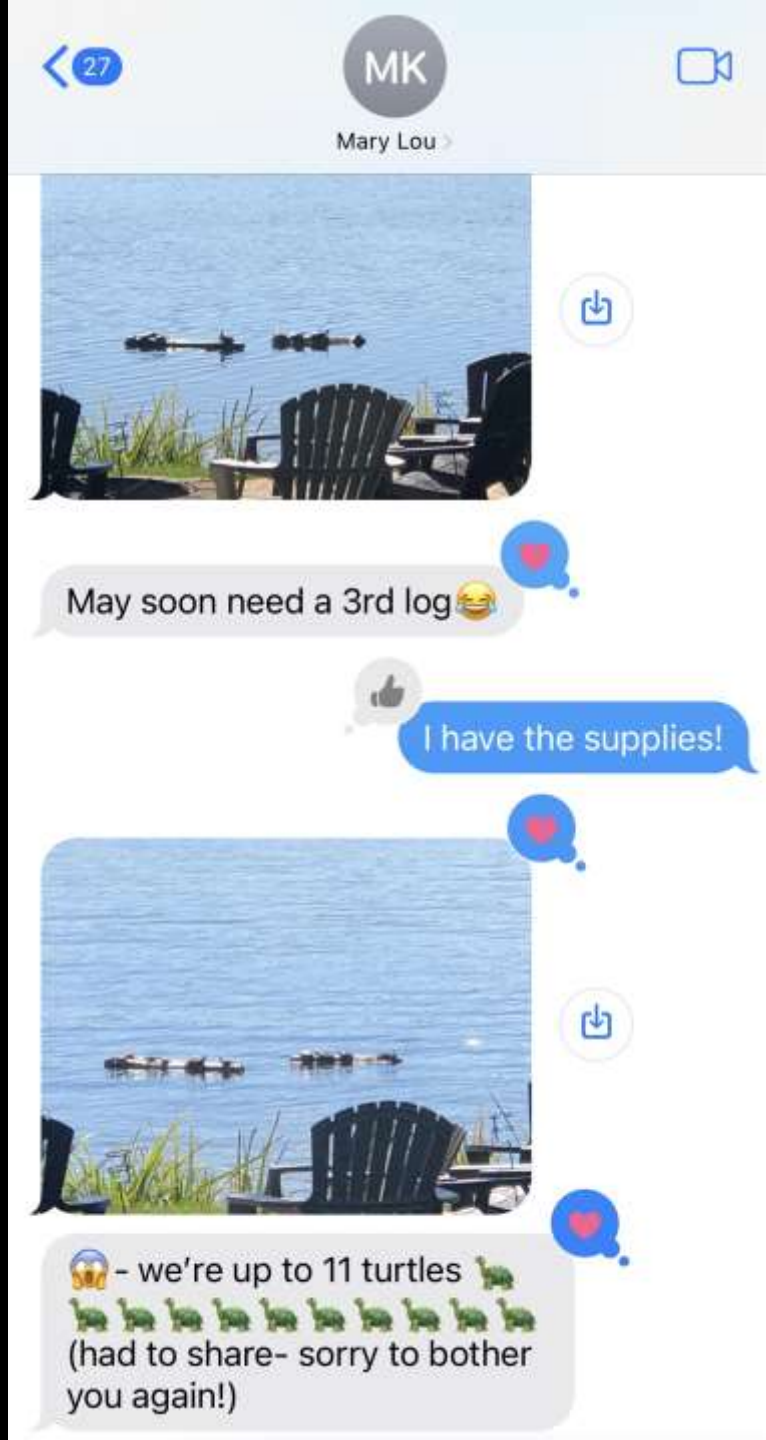
The Maiden Voyage!



“BUILD IT AND THEY WILL COME.”



AND THEN ONE DAY...



THE TURLSLA...



Installing Turtle TV one log at a time!





“It does not
matter how slowly
you go, so long as
you do not stop.”

-Confucius

DO I NEED A PERMIT?

- While a turtle log is a temporary structure (taken out of the water in late Fall), it does not fall under the Temporary Structure Exemption (docks, etc.) as its primary use is for wildlife habitat...not human recreation.
 - If you would like to install a turtle log in your lake, a permit from EGLE is required. For more information, and to submit a permit application visit [www. https://mienviro.michigan.gov](https://mienviro.michigan.gov)
 - Minor Project Permit → MP 22. Fish and Wildlife Habitat Structures → \$100
-





**LET'S CONTINUE TO MAKE MICHIGAN A PLACE WHERE
TURTLES ARE HAVING THE TIME OF THEIR LIFE!**